



GAT MONTHLY MEMBERSHIP PROGRESS REPORT

Results as of: 2/28/2023

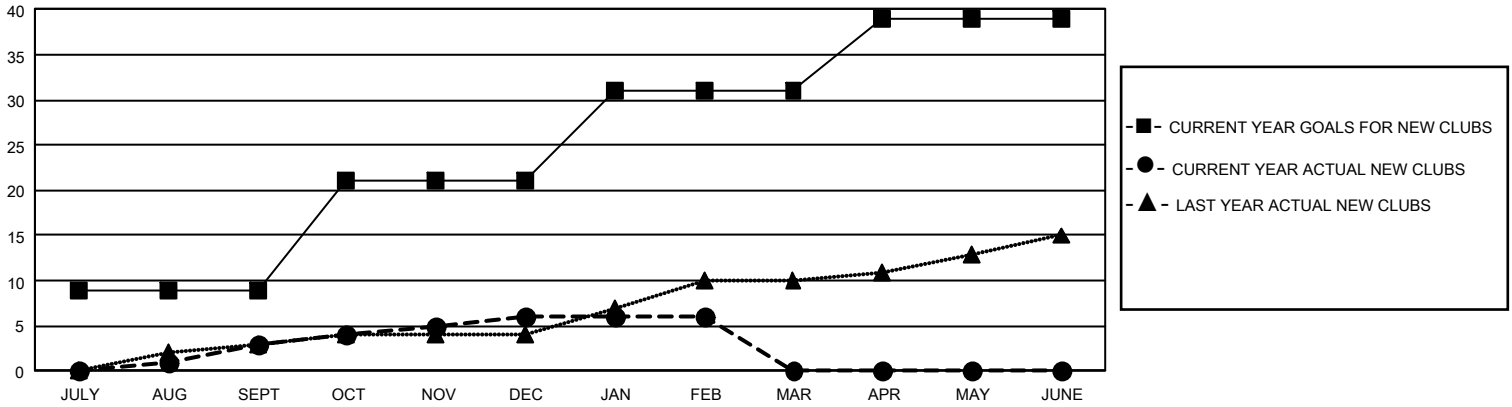
GMT Constitutional Area 1, Group M

REPORT DOES NOT INCLUDE CLUBS IN UNDISTRICTED AREAS.

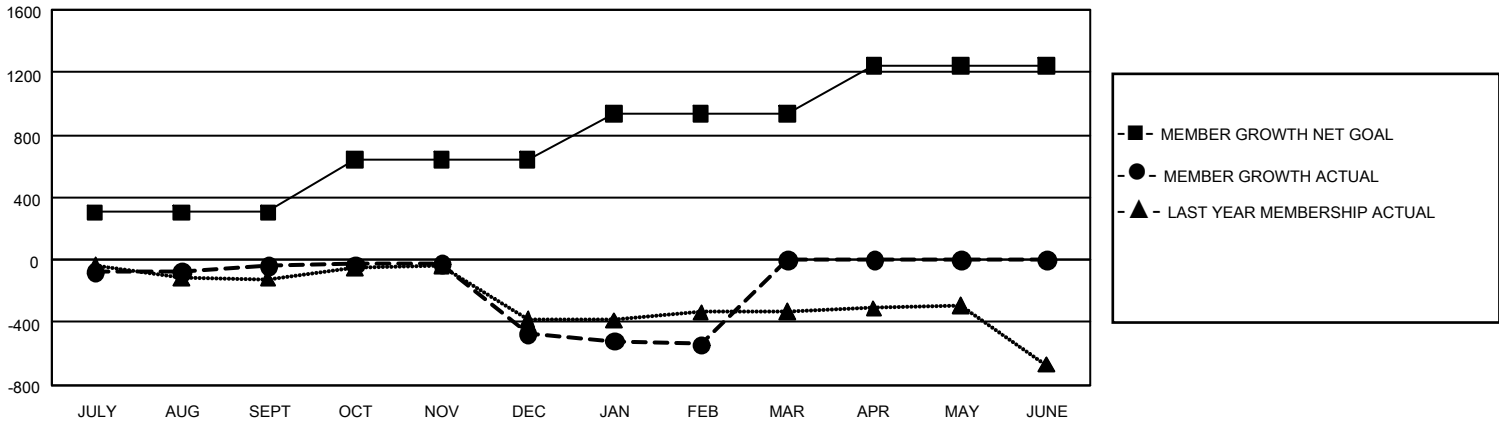
Clubs			
RESULTS FOR 2022-2023			
QUARTER	NEW CLUB GOAL	NEW CLUBS	DROPPED CLUBS
JULY/AUG/SEPT	27	3	7
OCT/NOV/DEC	36	3	18
JAN/FEB/MAR	30	0	7
APR/MAY/JUNE	24	0	0

Members			
RESULTS FOR 2022-2023			
QUARTER	MEMBER GROWTH NET GOAL	MEMBER GROWTH ACTUAL	DROPPED MEMBERS ACTUAL (including transfers)
JULY/AUG/SEPT	306	618	561
OCT/NOV/DEC	335	550	939
JAN/FEB/MAR	292	440	440
APR/MAY/JUNE	307	0	0

GOALS AND ACTUAL NEW CLUBS CUMULATIVE



GOALS AND ACTUAL MEMBERS CUMULATIVE



DROPPED CLUBS: 32 DROPPED MEMBERS DECEASED 220 CLUB CANCELLED 250 OTHER 1,472 TOTAL 1,942	352 CLUBS OF 792 ADDED 1 OR MORE NEW MEMBERS	GENDER DISTRIBUTION MALE 10,124 (60.78%) FEMALE 6,527 (39.19%) NON BINARY 1 (0.01%) PREFER NOT TO ANSWER 4 (0.02%)
	CLICK HERE FOR CUMULATIVE MEMBERSHIP DATA	TOTAL FAMILY UNIT MEMBERS 3,526 FAMILY MEMBERS PAYING HALF DUES 1,807